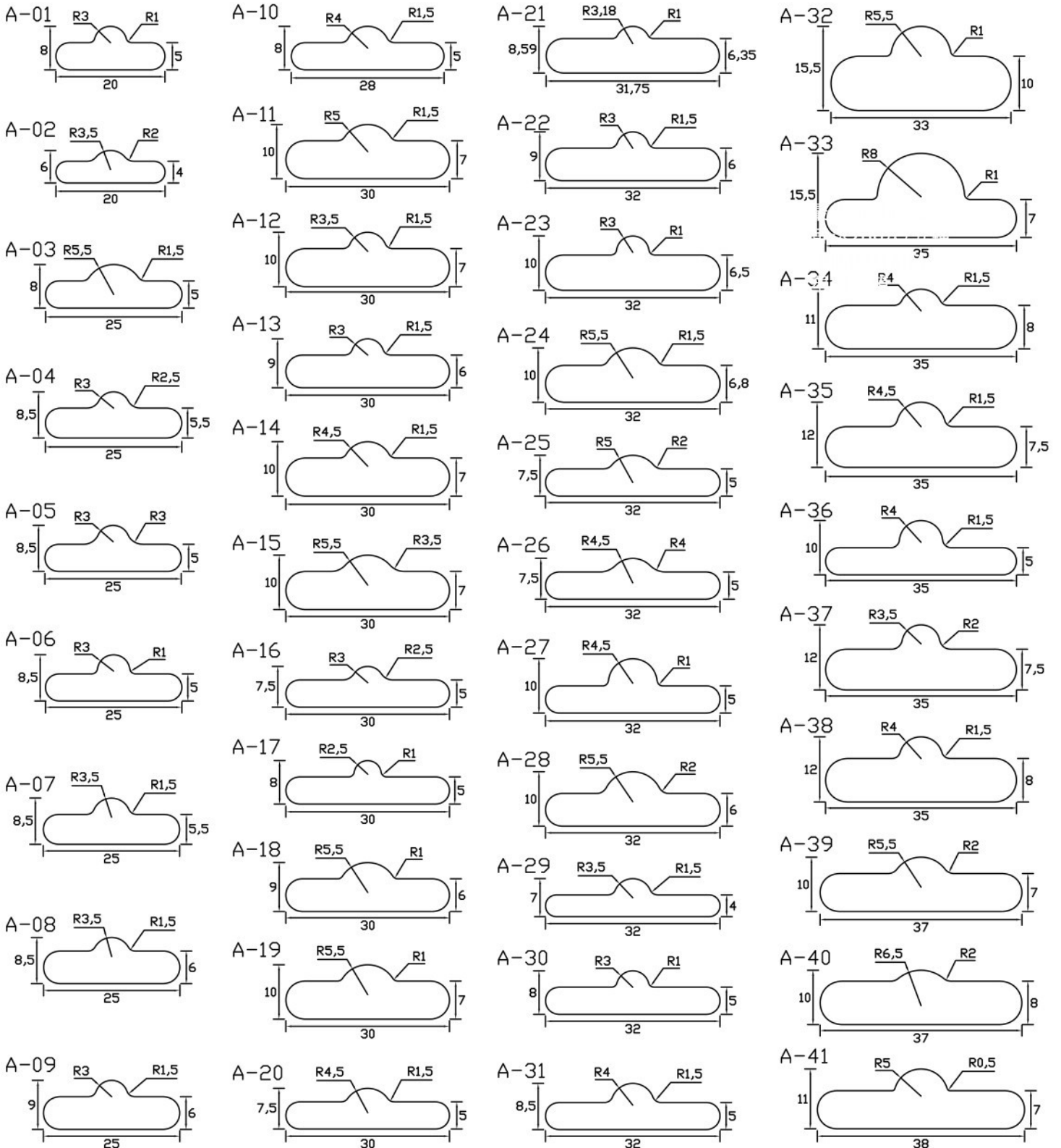


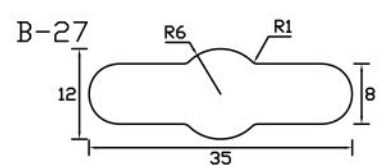
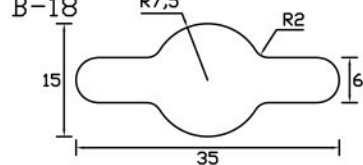
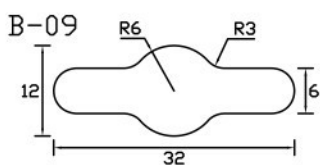
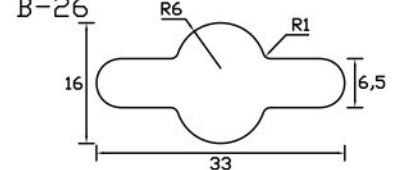
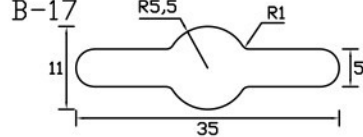
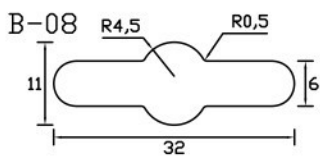
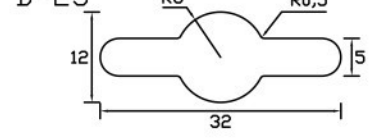
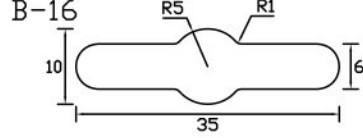
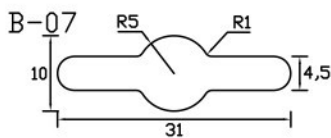
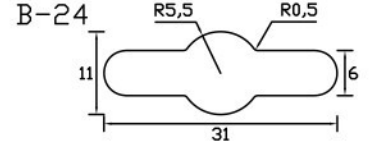
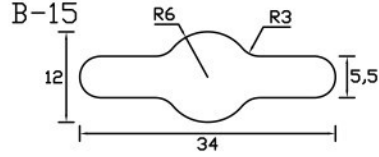
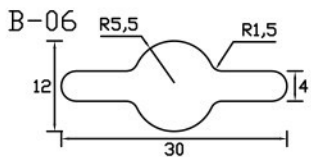
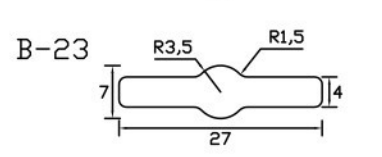
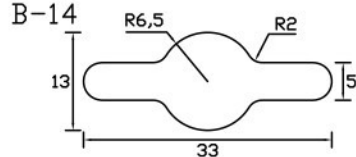
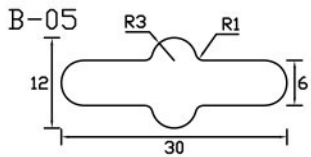
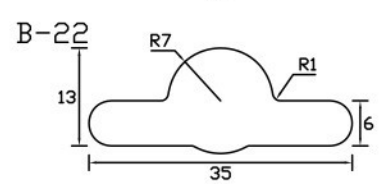
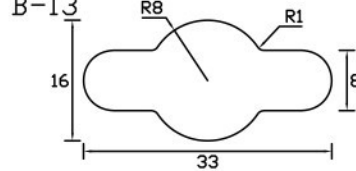
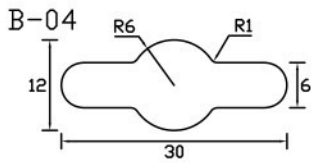
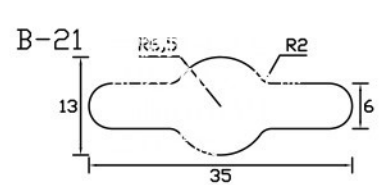
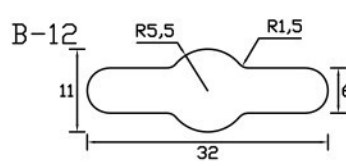
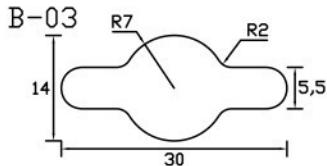
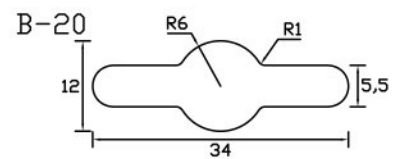
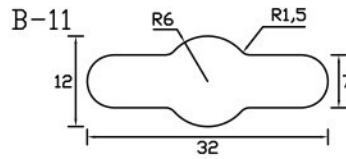
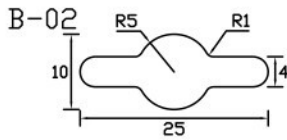
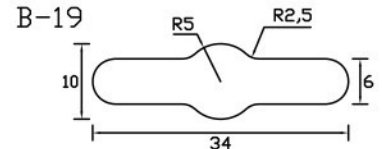
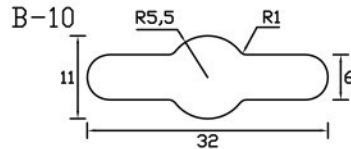
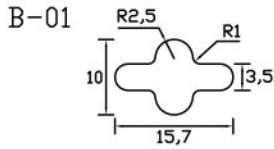
Butterfly Hole

Hole-reference

pneumatic butterfly hole punch is applied to punch hole for PO,PP,PE,OPP,PVC,PPE, PPU, CPP, plastic bag, header bag, etc. The working speed can be up to 260 times/minute, and can punch through 0.01mm thick plastic film.



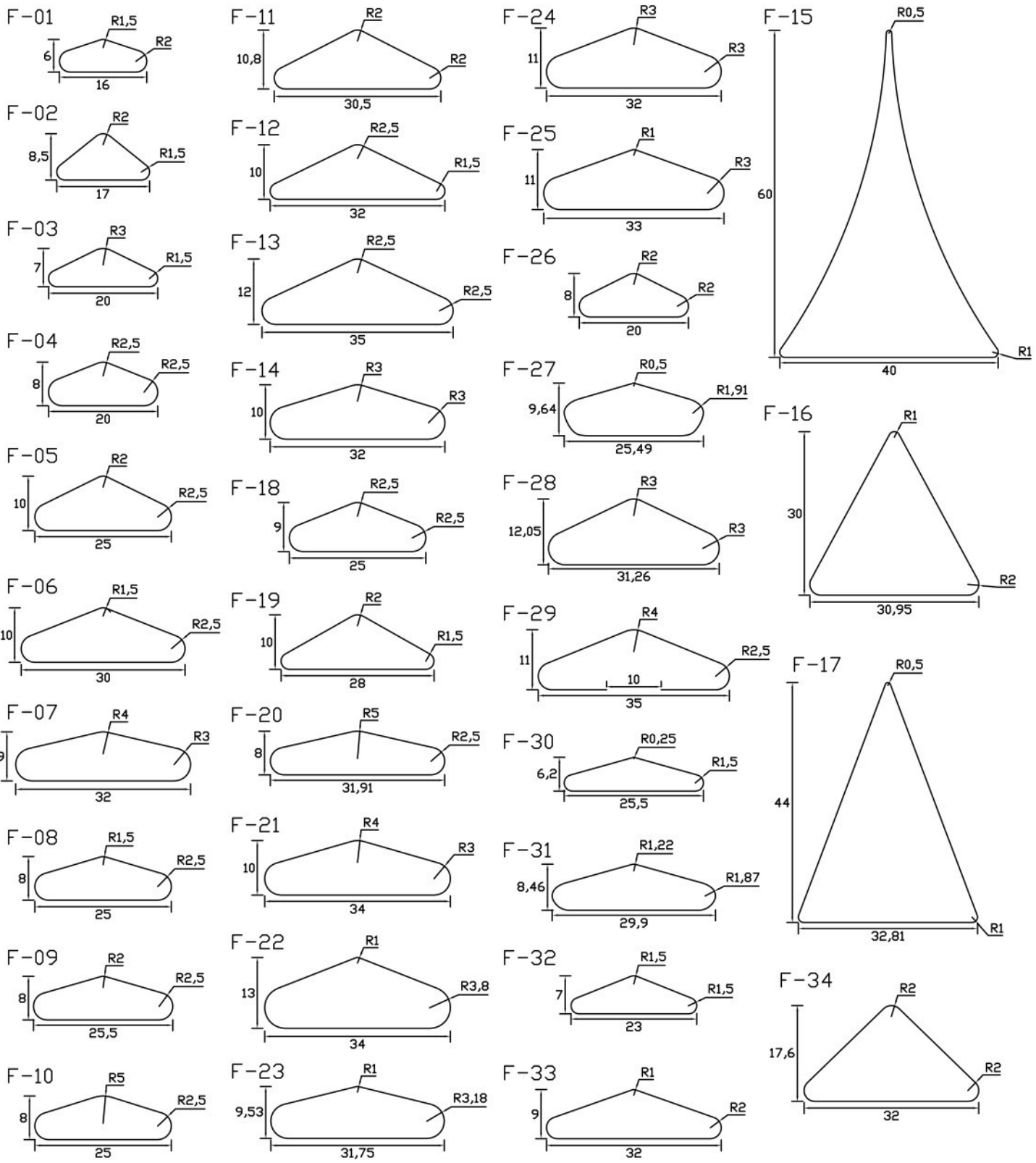
pneumatic euro hole punch is applied to punch hole for PO,PP,PE,OPP,PVC,PPE, PPU, CPP, plastic bag, header bag, etc. The working speed can be up to 260 times/minute, and can punch through 0.01mm thick plastic film.



Triangle Hole

Hole-reference

Pneumatic triangle hole punch are applied to punch hole for PO,PP,PE,OPP, PVC,PPE,PPU,CPP,plastic bag,header bag,etc.The working speed can be up to 260 times/minute,and can punch through 0.01mm thick plastic film.

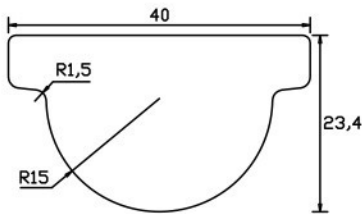


Corner Notch Hole

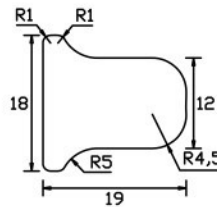
Hole-reference

Corner cut punch are applied to punch hole for PO, PP, PE, OPP, PVC, PPE, PPU, CPP, plastic bag, header bag, etc. The working speed can be up to 260 times/minute, and can punch through 0.01 mm thick plastic film.

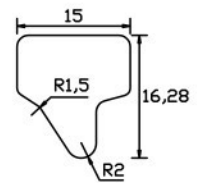
C-01



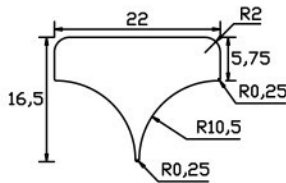
C-02



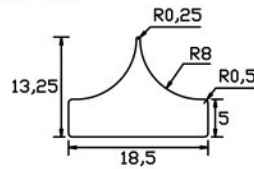
C-03



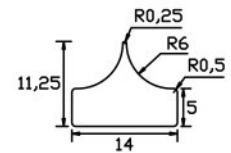
C-04



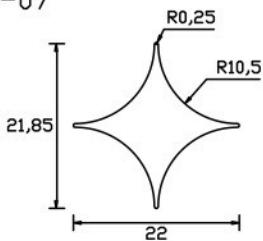
C-05



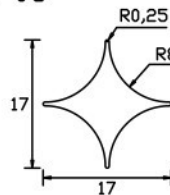
C-06



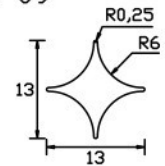
C-07



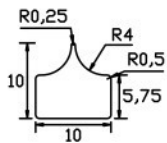
C-08



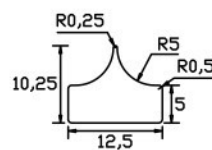
C-09



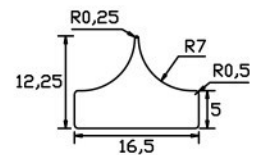
C-10



C-11



C-12



>> Tear Notch Hole

Hole-reference

Tear notch hole punch are applied to punch hole for PO, PP, PE, OPP, PVC, PPE, PPU, CPP, plastic bag, header bag, etc. The working speed can be up to 260 times/minute, and can punch through 0.01mm thick plastic film.

D-01



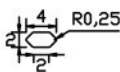
D-02



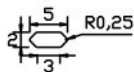
D-03



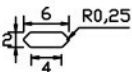
D-04



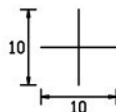
D-05



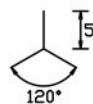
D-06



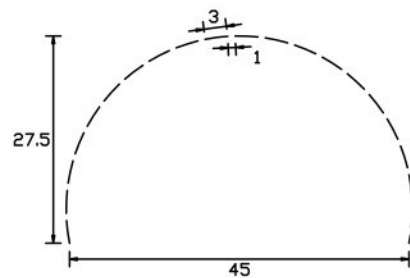
E-01



E-02



E-03

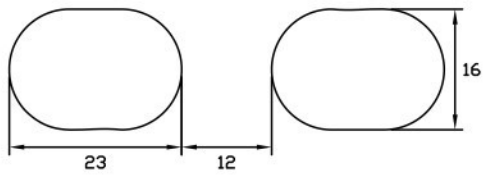


Handle-Hole

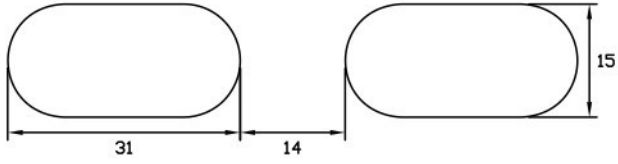
Hole-reference

pneumatic handle/D hole punch is applied to punch hole for shopping bags, rice bags, detergent bags, non-woven bags, fruit bags and other portable plastic/paper bags.

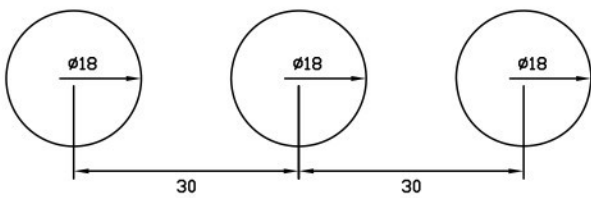
G-01



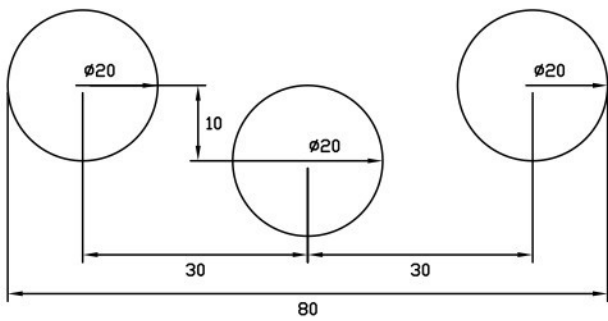
G-02



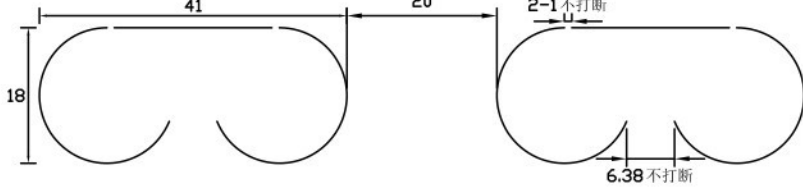
G-03



G-04



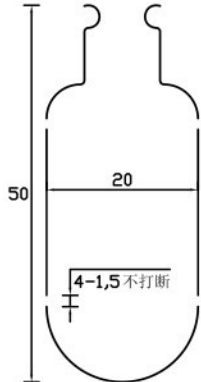
G-05



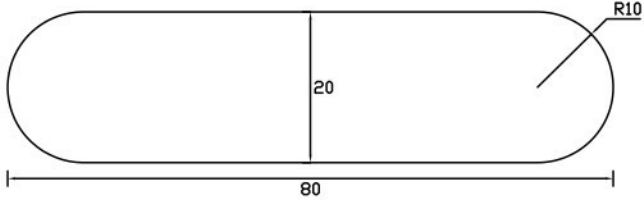
G-10



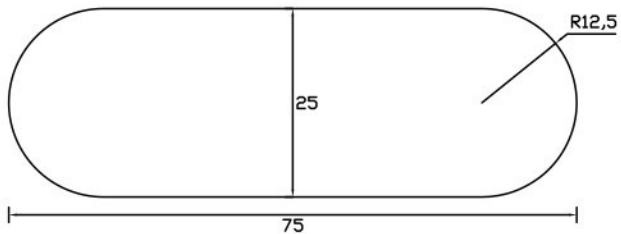
G-11



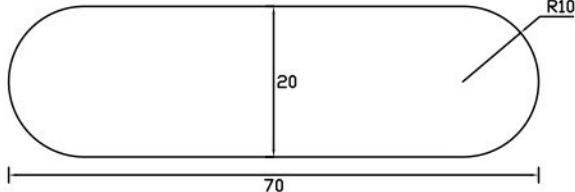
G-12



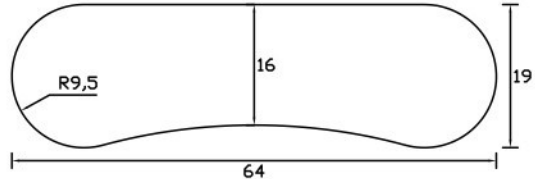
G-13



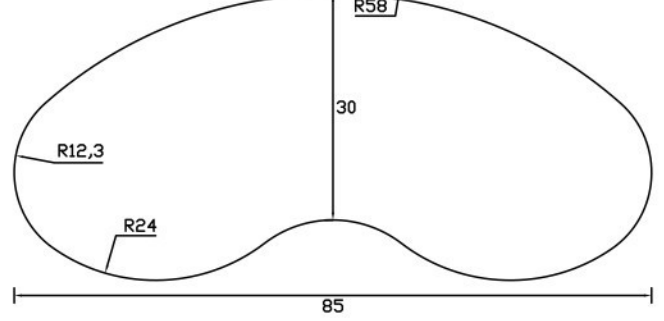
G-14



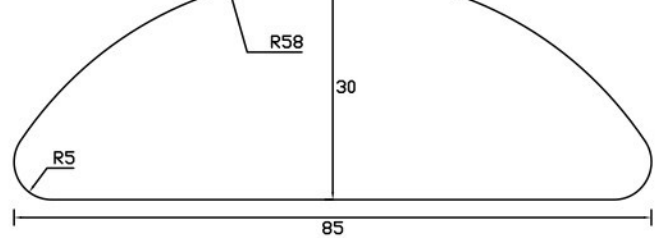
G-15



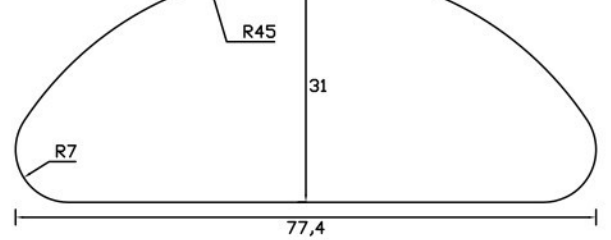
G-06



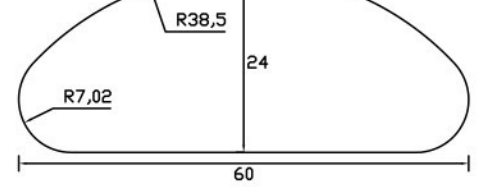
G-07



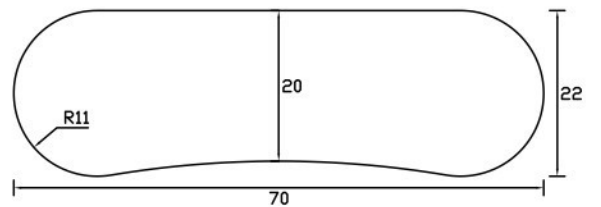
G-08



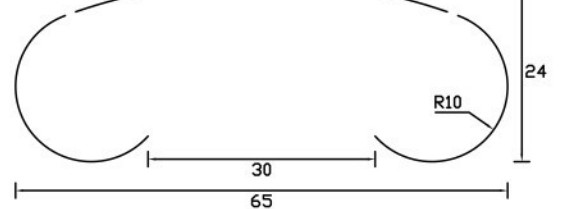
G-09



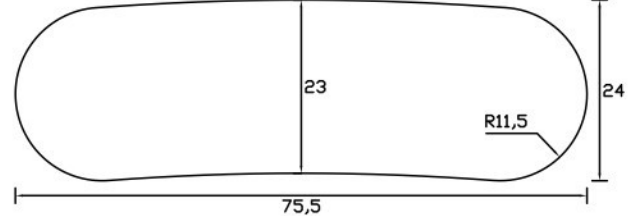
G-16



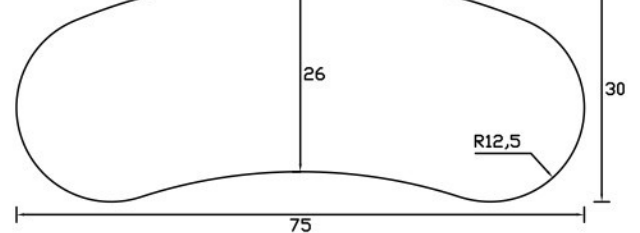
G-17



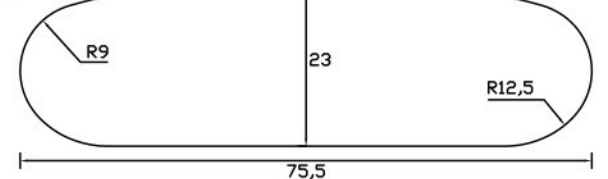
G-18



G-19



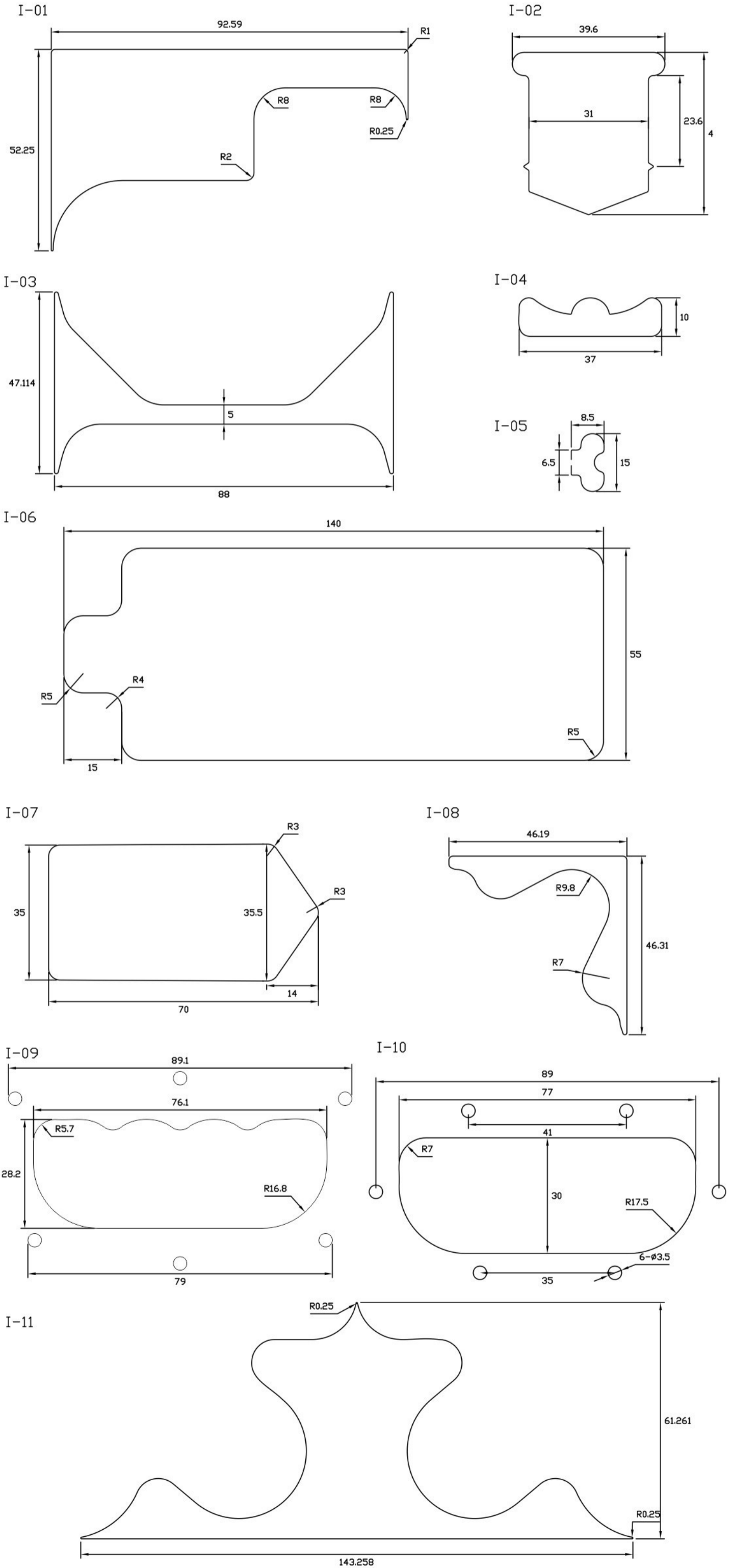
G-20



Special-shaped Hole

Hole-reference

pneumatic special-shaped hole punch is applied to punch hole for soybean milk bags, detergent bags, jelly bags, rice bags (working with plastic handle/holder/buckle). It can also be used to punch hole for auto-packing machine and can punch through 0.01mm thick plastic film.



Multi-hole punching machine

Hole-reference

pneumatic multi-hole punch is applied to punch hole for photo album bag, fruit bag, A4 file bag, white strip bag, name-card bag, internal CD bag and various paper products.

